

Section 3

DOMESTIC PRICES

Table (4) Annual Inflation In Domestic Price Indices-----	17
Table (5) Inflation in Consumer Prices (Percent Change)-----	18
Table (6) Inflation in Producer Prices According to Economic Activity Classification-----	19
Table (7) Inflation in Producer Prices According to End use Classification-----	20
Table (8) Inflation in Producer Prices According to Stage of Processing Classification-----	20
Table (9) Exchange Rates-----	21

Table (4): Annual Inflation In Domestic Price Indices ^{1/ 2/ 3/}

Summary Profile
2015 - 2019

	2016				2017				2018				2019			
	CPI			PPI	CPI			PPI	CPI			PPI	CPI			PPI
	Urban	Overall Egypt	Core		Urban	Overall Egypt	Core		Urban	Overall Egypt	Core		Urban	Overall Egypt	Core	
January	10.1	10.7	7.73	0.5	28.1	29.6	30.9	37.2	17.1	17.0	14.4	25.0	12.7	12.2	8.6	7.8
February	9.1	9.5	7.50	-1.3	30.2	31.7	33.1	37.7	14.4	14.3	11.9	22.8	14.4	13.9	9.2	11.9
March	9.0	9.2	8.41	0.6	30.9	32.5	32.3	37.1	13.3	13.1	11.6	24.1	14.2	13.8	8.9	12.7
April	10.3	10.9	9.51	1.1	31.5	32.9	32.1	38.1	13.1	12.9	11.6	24.0	13.0	12.5	8.1	--
May	12.3	12.9	12.23	1.5	29.7	30.9	30.6	35.7	11.4	11.5	11.1	28.1				
June	14.0	14.8	12.37	5.7	29.8	30.9	31.9	34.9	14.4	13.8	10.9	34.0				
July	14.0	14.8	12.31	7.2	33.0	34.2	35.3	38.7	13.5	13.0	8.5	30.4				
August	15.5	16.4	13.25	11.2	31.9	33.2	34.9	38.2	14.2	13.6	8.8	25.6				
September	14.1	14.6	13.94	9.2	31.6	32.9	33.3	38.8	16.0	15.4	8.6	24.4				
October	13.6	14.0	15.72	11.9	30.8	31.8	30.5	35.1	17.7	17.5	8.9	26.3				
November	19.4	20.2	20.73	21.0	26.0	26.7	25.5	27.9	15.7	15.6	7.9	18.1				
December	23.3	24.3	25.86	28.8	21.9	22.3	19.9	26.9	12.0	11.1	8.3	9.0				

Source: CAPMAS.

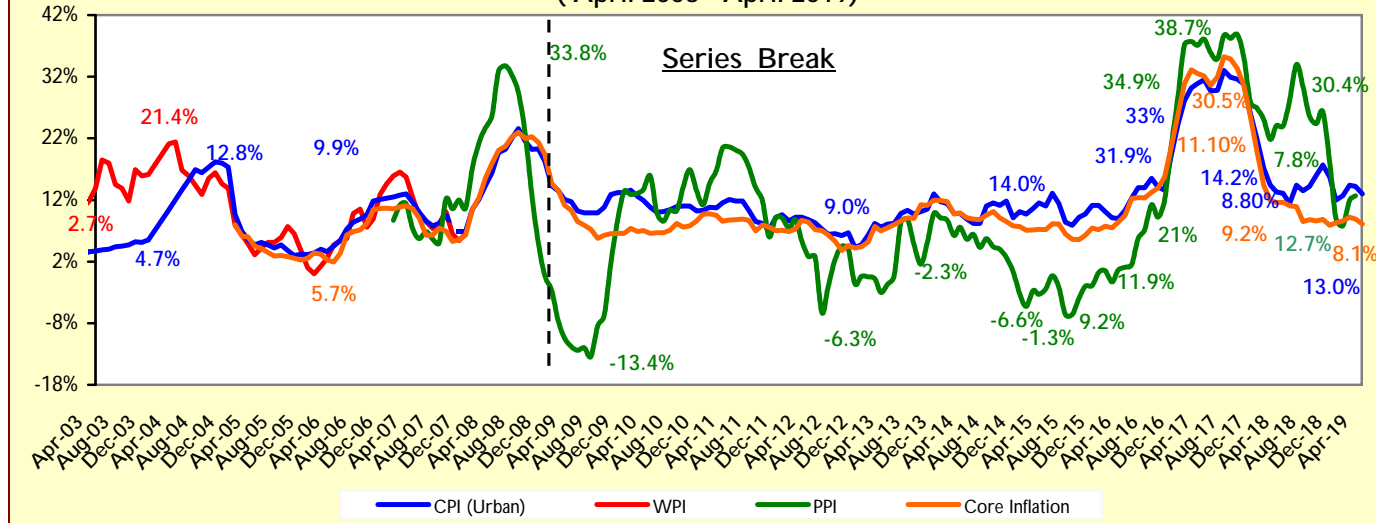
--Data not available.

1/ Starting August 2009, CPI Urban data is based on the weights derived from 2008/2009 income and expenditure survey, and using January 2010 as a base month. Prior to this date, the basket and weights were derived from 2004/2005 income and expenditure survey taking January 2007 as a base month.

2/ The new series of Producer Price Index was issued by CAPMAS starting September 2007, using 2004/2005 prices of goods and services as a base period, and deriving sub-group weights from average values of agricultural, industrial and services production for the years 2002/2003 and 2003/2004. It is worth mentioning that Producer Price Index series before September 2007 are not available so far.

3/ The Central Bank of Egypt launched "Core Inflation Index" derived from the CAPMAS headline CPI, however it excludes items characterized by inherent price volatility and those with managed prices, specifically 'fruits and vegetables' (8.8 percent of headline CPI basket) as well as 'regulated items' (19.4 percent of headline CPI basket).

Fig (7): Annual Inflation Rates
(April 2003 - April 2019)



Source: CAPMAS.

DOMESTIC PRICES

Table (5): Inflation in Consumer Prices ^{1/}
(Percent Change)

	Year on Year Quarterly 2/				Year on Year Monthly 3/				
	Jan-March 2018	Jul-Sep 2018	Oct-Dec 2018	Jan-March 2019	Apr-18	Jan-19	Feb-19	Mar-19	Apr-19
CPI Inflation	14.9	14.6	15.1	13.7	13.1	12.7	14.4	14.2	13.0
Food & Beverages	13.9	2.0	16.7	14.4	11.1	12.5	15.4	15.2	13.0
Alcoholic Beverages & Tobacco	26.3	11.5	14.2	10.5	20.7	10.4	10.5	10.6	10.6
Clothing & Footwear	23.3	10.5	9.8	9.1	27.3	7.6	9.9	9.9	7.8
Housing, Water, Electricity and Fuel	10.7	13.8	14.9	14.9	10.6	14.9	14.9	14.9	15.0
Furniture and Equipment and Maintenance	11.9	5.2	8.5	4.8	11.6	4.9	4.8	4.8	4.7
Medical Care	8.3	0.3	4.0	5.3	7.5	5.1	5.4	5.5	5.7
Transportation Expenditures	14.3	28.4	39.0	39.5	13.7	39.3	39.5	39.6	39.1
Communication	11.0	7.5	0.0	0.0	11.0	0.0	0.0	0.0	0.1
Entertainment	38.9	-0.8	8.1	7.0	39.7	8.2	8.2	4.6	7.0
Education	19.6	10.0	14.6	14.6	19.6	14.7	14.7	14.7	14.7
Hotels and Restaurants	12.2	2.3	10.0	12.0	10.8	11.4	12.0	12.6	12.1
Miscellaneous	19.1	10.4	11.7	8.0	16.7	7.9	8.1	7.9	8.2

Source: CAPMAS.

1/ In urban areas.

2/ Change in index over the same quarter in the previous year. Starting the period July-September 2010, data are based on new CPI series recently published by CAPMAS which use January 2010 as a base month and assume new weights for sub-groups in accordance with 2008/2009 income expenditure survey.

3/ Change in index over the same month in the previous year . Starting January 2009, data are based on new CPI series recently published by CAPMAS using January 2010 as base year.

Table (6): Inflation in Producer Prices According to Economic Activity Classification ^{1/}

(Percent Change)

	Year on Year Quarterly 2/				Year on Year Monthly 3/				
	Oct-Dec 2016	Apr-June 2017	Jul-Sep 2017	Oct-Dec 2017	Jan-17	Oct-17	Nov-17	Dec-17	Jan-18
Overall PPI Inflation	20.4	36.3	38.6	9.3	37.2	35.1	27.9	26.9	25.0
Agriculture, Forestry and Fishing	15.2	32.9	30.0	-1.1	27.2	32.0	28.2	26.9	23.1
Crop and animal production, hunting, and related service activities	15.5	33.6	30.7	-0.9	27.9	33.1	29.4	24.6	21.5
Fishing and Aquaculture	11.4	22.8	20.3	-1.5	18.6	16.3	12.0	63.5	46.3
Mining and Quarrying	8.0	9.8	12.8	42.3	50.1	15.7	23.4	23.0	27.6
Extraction of crude petroleum and natural gas	8.9	10.2	13.8	43.4	52.0	15.8	23.7	23.2	27.8
Other mining and quarrying	-22.4	-5.9	-21.3	-10.9	-9.2	8.2	7.4	4.4	5.5
Manufacturing	29.5	51.3	60.0	11.6	49.7	48.5	29.5	30.4	23.9
Food products	16.4	46.7	46.1	8.6	31.4	37.8	30.6	32.1	22.2
Beverages	29.6	29.6	29.6	1.2	29.6	9.6	9.6	11.6	11.6
Tobacco products	32.1	23.1	16.2	-15.5	40.5	10.9	10.9	20.7	16.4
Textiles	8.2	59.3	51.4	28.2	55.9	48.0	48.0	52.0	15.4
Wearing apparel	0.8	57.5	60.4	47.7	30.3	68.8	68.8	46.1	23.5
Leather and related products	5.3	29.0	29.0	29.8	29.0	27.6	27.6	52.2	45.7
Wood and wood products	17.3	43.5	44.3	13.2	47.5	44.6	38.0	35.0	21.7
Paper and paper products	18.1	65.3	75.8	38.1	33.6	50.9	50.9	49.5	41.8
Printing and reproduction of recorded media	0.0	0.0	0.0	-4.9	0.0	0.0	0.0	5.6	26.0
Coke and refined petroleum	35.8	48.4	91.1	11.6	48.3	75.2	29.8	41.6	41.7
Chemicals and chemical products	4.6	39.3	41.4	12.0	18.3	33.8	32.5	38.3	24.6
Pharmaceuticals, medicinal, chemical and botanical products	47.1	34.9	27.1	15.6	46.8	27.1	27.1	25.1	25.1
Rubber and plastic products	22.1	53.5	62.4	26.9	45.9	52.4	52.4	14.2	9.1
Other non-metallic mineral products	10.1	21.1	25.5	1.3	20.4	20.5	17.2	23.4	17.6
Basic Metals	72.5	82.8	91.9	18.2	127.2	68.6	42.6	19.4	14.8
Fabricated Metal products, except machinery and equipment	17.6	50.9	51.0	9.4	43.8	44.4	35.6	31.8	11.7
Computer, electronic and optical products	2.8	30.4	30.4	81.4	30.4	26.9	26.9	29.2	0.8
Electrical equipment	59.0	88.6	66.1	3.1	82.6	42.2	22.6	15.2	8.6
Machinery and Equipment, n.o.i	39.2	61.0	40.0	9.0	48.5	29.0	12.5	44.6	32.3
Motor vehicles, trailers and semi-trailers	33.8	41.4	29.1	10.1	38.0	15.7	3.7	1.8	1.8
Other transport Equipment	5.5	5.5	5.5	-0.9	5.5	3.4	3.4	1.6	1.6
Furniture	4.7	45.8	46.2	34.0	28.1	45.3	45.4	33.4	22.2
Other manufacturing	99.1	75.5	51.7	-13.9	126.0	17.4	16.2	34.9	8.9
Electricity, steam, gas and air conditioning supply	20.5	40.9	37.6	10.9	20.5	41.1	41.1	28.1	28.1
Water supply, sewerage, waste management, and remediation activities	14.3	0.0	8.9	4.5	14.3	26.6	26.6	31.4	31.4
Water collection, treatment and supply	24.9	0.0	14.1	11.4	24.9	42.4	42.4	46.1	46.1
Waste collection, treatment and disposal activities	0.0	0.0	0.0	-9.8	0.0	0.0	0.0	10.1	10.1
Transportation and storage	13.3	12.8	1.8	-11.7	12.8	1.2	0.0	5.4	5.4
Land transport and transport via Pipelines	6.8	10.2	15.2	-6.9	10.2	10.2	0.0	10.4	10.4
Water transport	0.0	0.0	0.0	-8.5	0.0	0.0	0.0	10.5	10.5
Air Transport	14.2	13.2	0.0	-12.7	13.2	0.0	0.0	3.9	3.9
Postal and courier activities	54.1	54.1	54.1	-0.3	54.1	0.0	0.0	0.0	0.0
Accommodation and Food Service Activities	31.1	34.8	30.2	-0.2	36.0	7.0	7.0	30.8	28.7
Accommodation	58.1	56.5	46.1	12.3	64.5	4.8	4.8	41.5	41.6
Food and beverage service activities	5.3	12.5	12.4	-14.0	8.9	10.1	10.1	26.3	23.2
Information and communications	0.0	0.0	0.0	-2.3	0.0	0.0	0.0	4.6	4.6

DOMESTIC PRICES

Source: CAPMAS.

1/ The new series of Producer Price Index was issued by CAPMAS starting September 2007, using 2004/2005 prices of goods and services as a base period, and deriving sub-group weights from average values of agricultural, industrial and services production for the years 2002/2003 and 2003/2004.

2/ Change in index over the same quarter in the previous year.

3/ Change in index over the same month in the previous year.

Table (7): Inflation in Producer Prices According to End Use Classification ^{1/}

	Year on Year Quarterly 2/				Year on Year Monthly 3/				
	Oct-Dec 2016	Apr-Jun 2017	Jul-Sep 2017	Oct-Dec 2017	Jan-17	Oct-17	Nov-17	Dec-17	Jan-18
Overall PPI Index	20.4	36.3	38.6	9.3	37.2	35.1	27.9	26.9	25.0
Fuel	35.8	48.4	91.1	12.7	48.3	75.2	29.8	-50.7	27.7
Raw Materials	28.5	31.4	31.8	6.1	73.2	20.5	23.3	-21.8	9.4
Intermediate Goods	31.2	44.7	49.4	14.4	52.2	38.6	25.4	-15.9	27.8
Non-Durable Consumer Goods	12.6	-8.4	-19.7	-51.0	25.7	-50.9	-47.9	-54.2	26.6
Durable Consumer Goods	11.1	37.8	143.6	125.5	37.9	195.1	175.9	7.5	13.7
Capital Goods	9.9	93.8	16.5	9.2	15.3	12.3	6.3	9.2	4.2

Table (8): Inflation in Producer Prices According to Stage of Processing Classification ^{1/}

	Year on Year Quarterly 2/				Year on Year Monthly 3/				
	Oct-Dec 2016	Apr-Jun 2017	Jul-Sep 2017	Oct-Dec 2017	Jan-17	Oct-17	Nov-17	Dec-17	Jan-18
Overall PPI Index	20.4	36.3	38.6	9.3	37.2	35.1	27.9	26.9	25.0
Fuel	26.7	34.6	61.4	22.3	64.7	48.9	27.3	-3.7	31.1
Cotton	90.4	90.4	90.4	-12.2	90.4	0.0	0.0	-36.6	11.6
Raw Materials	13.6	31.6	28.7	-2.0	25.7	32.7	25.1	-61.6	19.8
Semi-Finished Goods	12.8	31.3	29.6	11.1	25.0	30.1	17.5	-13.1	11.6
Finished Goods	29.0	49.5	50.0	10.8	50.6	38.8	29.1	-30.7	21.7

Source: CAPMAS.

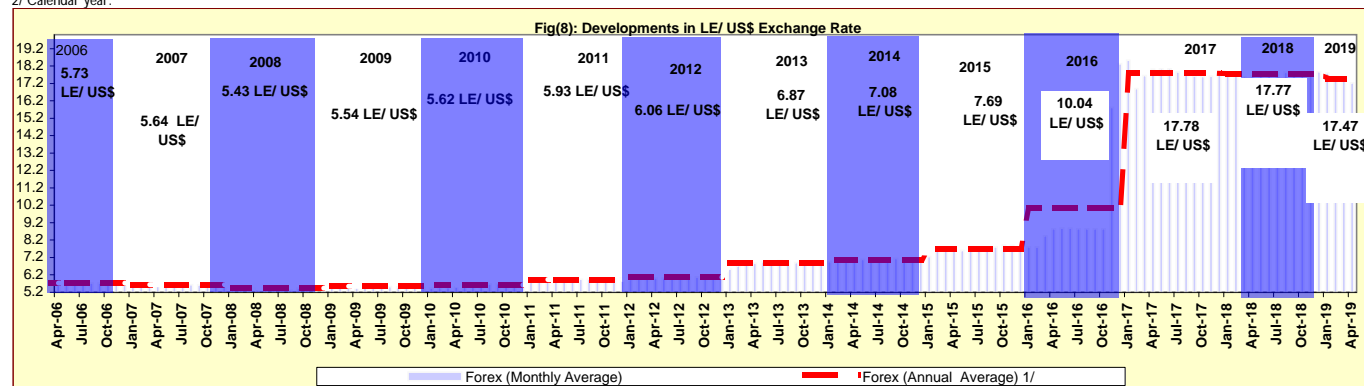
1/ The new series of Producer Price Index was issued by CAPMAS starting September 2007, using 2004/2005 prices of goods and services as a base period, and deriving sub-group weights from average values of agricultural, industrial and services production for the years 2002/2003 and 2003/2004.

2/ Change in index over the same quarter in the previous year.

3/ Change in index over the same month in the previous year.

Table (9) : Exchange Rates

	Domestic Market			International Markets	
	(LE / currency units) ^{1/}			(US \$ / currency units)	
	US Dollar	Pound Sterling	Euro	Euro	Pound Sterling
Yearly Averages ^{2/}					
2007	5.636	11.448	7.836	1.370	2.002
2008	5.431	10.186	8.078	1.471	1.855
2009	5.542	8.764	7.804	1.394	1.565
2010	5.622	8.783	7.541	1.329	1.546
2011	5.933	9.535	8.277	1.393	1.604
2012	6.056	9.614	7.801	1.286	1.585
2013	6.869	10.749	9.126	1.328	1.564
2014	7.079	11.672	9.413	1.329	1.648
2015	7.693	11.785	8.558	1.119	1.529
2016	10.018	13.456	11.044	1.122	1.352
2017	17.777	22.961	20.129	1.138	1.288
2018	17.767	23.783	21.039	1.224	1.335
Monthly Averages					
Apr-16	8.857	12.698	10.069	1.339	1.430
May-16	8.857	12.893	10.035	1.130	1.452
Jun-16	8.857	12.615	9.976	1.124	1.421
Jul-16	8.857	11.677	9.827	1.107	1.315
Aug-16	8.858	11.627	9.949	1.120	1.309
Sep-16	8.857	11.674	9.950	1.121	1.315
Oct-16	8.858	10.956	9.780	1.104	1.236
Nov-16	15.813	19.762	17.111	1.080	1.245
Dec-16	18.330	22.967	19.388	1.054	1.248
Jan-17	18.537	22.941	19.755	1.062	1.234
Feb-17	16.904	21.248	18.130	1.065	1.248
Mar-17	17.647	21.701	18.808	1.069	1.234
Apr-17	18.026	22.803	19.327	1.071	1.263
May-17	18.031	23.335	19.964	1.105	1.292
Jun-17	18.040	23.172	20.331	1.228	1.279
Jul-17	17.862	23.307	20.655	1.153	1.301
Aug-17	17.714	23.009	20.977	1.182	1.296
Sep-17	17.613	23.498	21.036	1.192	1.331
Oct-17	17.597	23.295	20.743	1.175	1.320
Nov-17	17.614	23.349	20.740	1.174	1.322
Dec-17	17.743	23.881	21.087	1.184	1.341
Jan-18	17.653	24.439	21.588	1.219	1.380
Feb-18	17.624	24.700	21.827	1.235	1.398
Mar-18	17.576	24.614	21.735	1.233	1.396
Apr-18	17.631	24.860	21.698	1.227	1.406
May-18	17.783	23.974	21.046	1.182	1.347
Jun-18	17.825	23.760	20.868	1.676	1.330
Jul-18	17.841	23.571	20.912	1.169	1.318
Aug-18	17.834	23.010	20.630	1.153	1.286
Sep-18	17.856	23.337	20.850	1.165	1.304
Oct-18	17.859	23.325	20.582	1.149	1.302
Nov-18	17.861	23.100	20.355	1.137	1.289
Dec-18	17.865	22.708	20.382	1.138	1.267
Jan-19	17.805	23.050	20.413	1.142	1.289
Feb-19	17.530	22.861	19.954	1.135	1.300
Mar-19	17.381	22.886	19.639	1.129	1.316
Apr-19	17.223	22.478	19.388	1.123	1.302

Sources: Central Bank of Egypt, Reuters and Oanda (www.oanda.com).^{1/} Average of the Bid / Ask rates. (Mid Point). Data was revised since February 2017 reflecting CBE Average Exchange Rate.^{2/} Calendar year.

Source: Central Bank of Egypt and Reuters.

^{1/} Calendar year average.